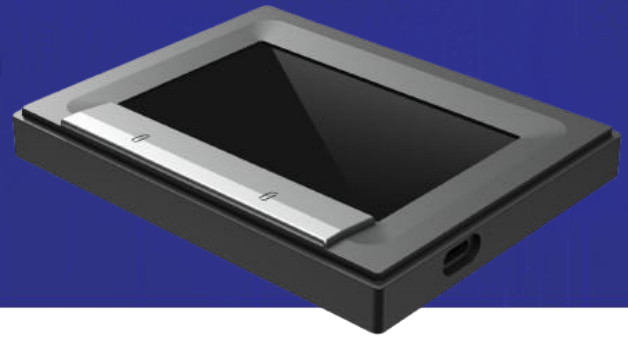


ANSWER IS
YOUR ANSWER

ROSSII GF851EM

Fingerprint Module
Easy Integration



Features

- Remarkable MatriXcan Fingerprint Sensor
- 4-4-2 fingers registration/verification
- Outstanding image quality on dry/worn/ wet fingers
- Latent print, UV, strong light resistance
- Finger type detection and classification
- LFD supported (HW / SW)
- Slim and compact design
- Hard surface for scratch protection
- Excellent ESD performance
- High security and reliability
- Encryption function
- IP65 (sealed bezel to scanning surface)

OS Support

- Windows7+
- Linux (X64, ARM)
- Android 4.2+

Certification

- FBI Appendix F (FAP50)
- MOSIP
- FCC
- CE
- RoHS

MatriXcan™ Technology

Differing from two kinds of typical fingerprint verification solution, optical and capacitive, iMD's world-leading technology MatriXcan™ is able to capture the best quality of fingerprint images, to extract most minutiae you have ever seen, and to output with outstanding speed and security. MatriXcan™, the extremely clear and distinct images captured on dry, worn and wet fingers makes the high possibility to adapt all sorts of finger conditions without exceptions.

Specifications

Image Size	1600 pixels x 1000 pixels
Sensing Area	83.32 mm x 69.75 mm
Platen Area	83.4 mm x 70.2 mm
Resolution	500 dpi
FPS	Flats: 10 / sec, Rolls : 15 / sec
ESD Level	IEC 61000-4-2 Level 4
Power Consumption (read)	450 mA
Power Consumption (standby)	160 mA
Interface	USB 2.0 Type-C / 4 pin wafer connector
Device Size	115.87 mm x 90.87 mm x 15 mm
Device Weight	110.1 g
Temperature (Operation)	-10° C to +55° C
Temperature (Storage)	-40° C ~ +80 °C

