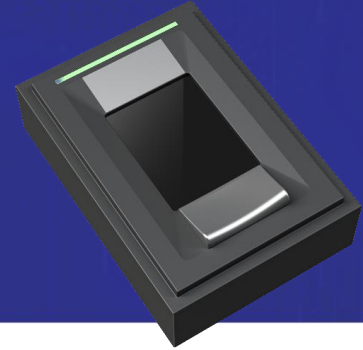


ANSWER IS  
YOUR ANSWER

# INDICUS GF421DM

Fingerprint Module  
Easy Integration



## Features

- Remarkable MatriXcan Fingerprint Sensor
- 1 finger registration/verification
- Outstanding image quality on dry/worn/ wet fingers
- Low power consumption
- Latent print, UV, strong light resistance
- LED status indicator
- LFD supported (HW / SW)
- Slim and compact design
- Hard surface for scratch protection
- Excellent ESD performance
- High security and reliability
- Encryption function
- Ingress protection IP65  
(sealed bezel to scanning surface)

## OS Support

- Windows7+
- Linux (X64, ARM)
- Android 4.2+

## Certification

- FBI PIV (FAP20)
- MOSIP
- FCC
- CE
- RoHS

## MatriXcan™ Technology

Differing from two kinds of typical fingerprint verification solution, optical and capacitive, iMD's world-leading technology MatriXcan™ is able to capture the best quality of fingerprint images, to extract most minutiae you have ever seen, and to output with outstanding speed and security. MatriXcan™, the extremely clear and distinct images captured on dry, worn and wet fingers makes the high possibility to adapt all sorts of finger conditions without exceptions.

## Specifications

Image Size	300 pixels x 400 pixels
Sensing Area	15.24 mm x 20.32 mm
Platen Area	15.88 mm x 35.97 mm
Resolution	500 dpi
FPS	Flats: 11 / sec
ESD Level	IEC 61000-4-2 Level 4
Power Consumption (read)	95 mA
Power Consumption (standby)	80-90 mA
Interface	USB 2.0 Full Speed 5 pin wafer connector
Device Size	48.2 x 33.8 x 14.9 mm
Device Weight	20.1g
Temperature (Operation)	-20°C ~ +70°C
Temperature (Storage)	-40°C ~ +80 °C

