

MatriXcan Panel

Revolutionary MatriXcan Panel for capturing best quality of images

MatriXcan Mapping

BPS
Bipolar Sampling

PRS
Partial Response
Synthesization

PNZ
Pixel Normalization

AGS
Anti Ghosting Scan



MatriXcan Extracting

Extract most minutiae you've ever seen

MatriXcan™

REVOLUTIONARY TECHNOLOGY

Differing from two kinds of typical fingerprint verification solution, optical and capacitive, iMD's world-leading technology MatriXcan™ is able to capture the best quality of fingerprint images, to extract most minutiae you have ever seen, and to output with outstanding speed and security.

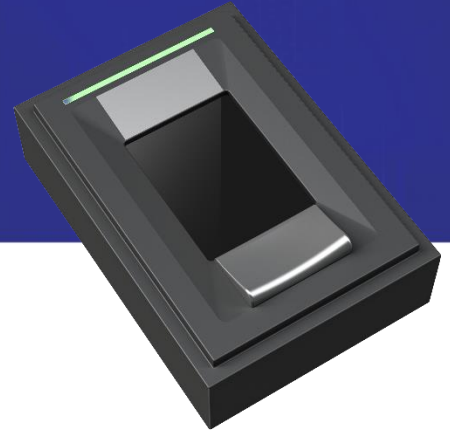
MatriXcan™, the extremely clear and distinct images captured on dry, worn and wet fingers makes the high possibility to adapt all sorts of finger conditions without exceptions.

ANSWER IS
YOUR ANSWER

INDICUS

GF421DM / GF421DM-S

Fingerprint Module
Easy Integration



FEATURE

- Remarkable GF Series Fingerprint Sensor!
- 1 finger registration/verification
- Outstanding image quality on dry/ worn/ wet fingers
- Low power consumption
- Latent print, UV, strong light resistance
- Hard surface for scratch protection
- Slim and compact design
- LED status indicator
- Live Finger Detection
- Excellent ESD performance
- High security and reliability
- Ingress protection IP65
- Encryption Function (GF421DM-S)

SPECIFICATIONS

Item	Parameters
Model Name	GF421DM / GF421DM-S
Image Size	300 Pixels x 400 Pixels
Sensing Area	15.24 mm x 20.32 mm
Platen Area	15.84 mm x 35.89 mm
Resolution	500 dpi / 256 grayscale
FPS	Flats: 11/sec
Led status indicator	RGB
LFD	Supported
Power Consumption (read image)	95 mA
Power Consumption (standby)	80~90 mA
Interface	USB 2.0 Full Speed
Device Size	48.2 mm x 33.8 mm x 13.5 mm
Device Weight	17 g
ESD Level	IEC 61000-4-2 Level 4
OS Support	Windows7+; Linux(X64, ARM); Android 4.2+
Certifications	FBI: PIV (FAP20) / FCC / CE / RoHS / RCA / UV
IP Rating	IP65
Temperature [Operating / storage]	-20°C ~ +70°C / -40°C ~ +80°C