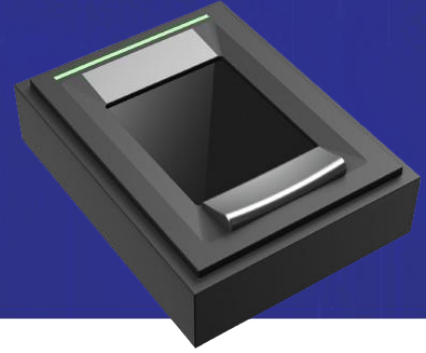


ANSER IS
YOUR ANSWER

FABALIS GF631BM

Fingerprint Module
Easy Integration



Features

- Remarkable MatriXcan Fingerprint Sensor
- 1 finger registration/verification
- Optimal fit for the thumbprint
- Outstanding image quality on dry/worn/ wet fingers
- Low power consumption
- Latent print, UV, strong light resistance
- LED status indicator
- LFD supported (HW / SW)
- Slim and compact design
- Hard surface for scratch protection
- Excellent ESD performance
- High security and reliability
- Encryption function
- Ingress protection IP65
(sealed bezel to scanning surface)

OS Support

- Windows7+
- Linux (X64, ARM)
- Android 4.2+

Certification

- FBI PIV (FAP30)
- MOSIP
- FCC
- CE

MatriXcan™ Technology

Differing from two kinds of typical fingerprint verification solution, optical and capacitive, iMD's world-leading technology MatriXcan™ is able to capture the best quality of fingerprint images, to extract most minutiae you have ever seen, and to output with outstanding speed and security. MatriXcan™, the extremely clear and distinct images captured on dry, worn and wet fingers makes the high possibility to adapt all sorts of finger conditions without exceptions.

Specifications

Image Size	400 pixels x 500 pixels
Sensing Area	20.32 mm x 25.4 mm
Platen Area	21.84 mm x 39.47 mm
Resolution	500 dpi
FPS	Flats: 4 / sec
ESD Level	IEC 61000-4-2 Level 4
Power Consumption (read)	85 mA
Power Consumption (standby)	65-75 mA
Interface	USB 2.0 Full Speed 5 pin wafer connector
Device Size	51.8 x 39.8 x 15.0 mm
Device Weight	24.3g
Temperature (Operation)	-20°C ~ +70°C
Temperature (Storage)	-40°C ~ +80 °C

