

MatriXcan Panel

Revolutionary MatriXcan Panel for capturing best quality of images

MatriXcan Mapping

BPS

Bipolar Sampling

PRS

Partial Response
Synthesization

PNZ

Pixel Normalization

AGS

Anti Ghosting Scan

MatriXcan Extracting

Extract most minutiae you've ever seen

MatriXcan™

REVOLUTIONARY TECHNOLOGY

Differing from two kinds of typical fingerprint verification solution, optical and capacitive, iMD's world-leading technology MatriXcan™ is able to capture the best quality of fingerprint images, to extract most minutiae you have ever seen, and to output with outstanding speed and security.

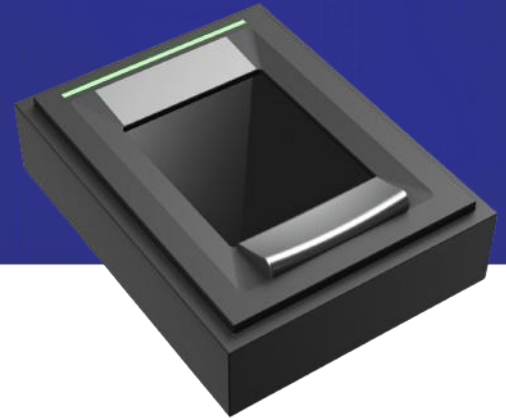
MatriXcan™, the extremely clear and distinct images captured on dry, worn and wet fingers makes the high possibility to adapt all sorts of finger conditions without exceptions.

FABALIS

ANSWER IS
YOUR ANSWER

GF631BM / GF631BM-S

Fingerprint Module
Easy Integration



FEATURE

- Remarkable GF Series Fingerprint Sensor!
- 1 finger registration/verification
- Optimal fit for the thumbprint
- Outstanding image quality on dry/ worn/ wet fingers
- Low power consumption
- Latent print, UV, strong light resistance
- Slim and compact design
- LED status indicator
- Live Finger Detection
- Hard surface for scratch protection
- Excellent ESD performance
- High security and reliability
- IP65 Rating
- Encryption Function (GF631BM-S)

SPECIFICATIONS

Item	Parameters
Model Name	GF631BM / GF631BM-S
Image Size	400 Pixels x 500 Pixels
Sensing Area	20.32 mm x 25.4 mm
Platen Area	21.8 mm x 39.36 mm
Resolution	500 dpi / 256 grayscale
FPS	Flats: 2/sec
LED status	RGB
LFD	Supported
Power Consumption (read image)	85 mA
Power Consumption (standby)	65~75 mA
Interface	USB 2.0 Full Speed
Device Size	51.8 mm x 39.8 mm x 13.5 mm
Device Weight	20.2 g
ESD Level	IEC 61000-4-2 Level 4
OS Support	Windows7+; Linux(X64, ARM); Android 4.2+
Certifications	FBI: PIV (FAP30) / FCC / CE / RoHS / RCA / UV
IP Rating	IP65
Temperature [Operation / Storage]	-20°C ~ +70°C / -40°C ~ +80°C